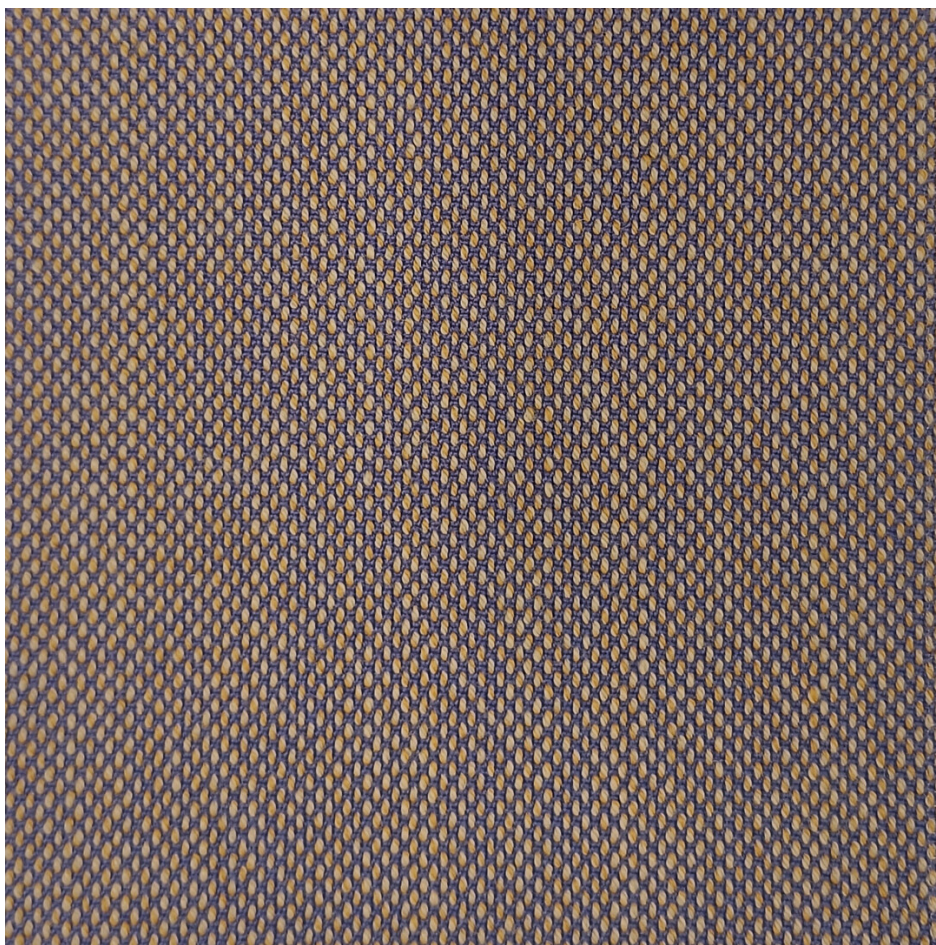


Steelcut Quartet



Steelcut Quartet is an upholstery textile with a pioneering melange look, which offers a new expression of the acclaimed designs Steelcut and Steelcut Trio. Characterised by softness, colour depth and durability, it has a sustainable profile and comes in optimistic, warm colourways by Giulio Ridolfo.



PILLING:

Note 3-4(1-5), ISO 12945

ABRASION RESISTANCE:

100.000 rubs acc. to the Martindale rubs, EN ISO 12947

CLEANING:

Vacuuming and dry cleaning.

COLOUR FASTNESS TO LIGHT:

Note 6, ISO 105-B02

COLOUR FASTNESS TO RUBBING:

4-5/4-5 - EN ISO 105x12 (wet/dry)

FLAMMABILITY:

NF D 60 013 · US Cal. Bull. 117-2013 · EN 1021-1/2 · ASTM E84 Class B Adhered · ÖNORM B2/Q1 · IMO FTP Code 2010 Part 8 · BS 5852 part 1 · UNI 9175 1IM · NFPA 260 · AS/NZS 1530.3 · EN 13501 B-s2, d1 with treatment · BS 5852 crib 5 with treatment · AS/NZS 3837 class 2 · SN 198 898 5.3 with treatment · ASTM E84 Class A Unadhered

MATERIAL:

90% new wool, worsted. 10% nylon

SUPPLIER:

Kvadrat

ECOLOGICAL FEATURES (MATERIALS):

EU Ecolabel
GREENGUARD Gold Certification
Environmental Product Declaration Certificate
Health Product Declaration® certified

ALL COLOURS:

All colours available in the fabric, with upholstered products typically taking between 20-50 working days to deliver, depending on the product and the quantity ordered.

